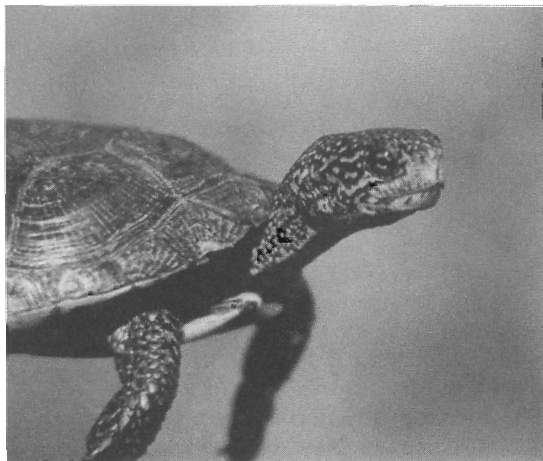


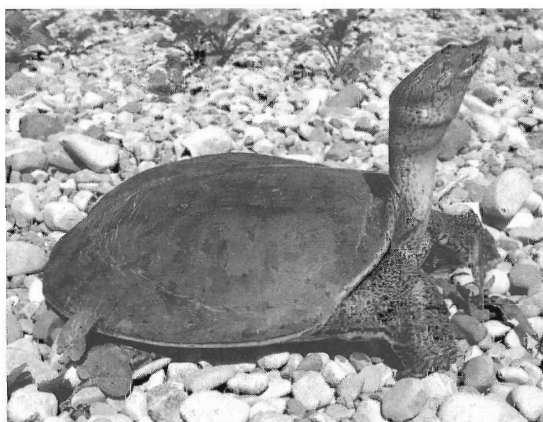
TURTLES (ORDER TESTUDINES)

Actinemys marmorata (Pacific Pond Turtle, Tortue de l'Ouest). **Other Names:** *Clemmys marmorata*, Western Pond Turtle. **Distribution:** Limited to 5 reports from the Vancouver area from 1933 to 1966, possibly representing introduced individuals or a relict population now likely extinct. No voucher specimens exist. Canadian populations would be assigned to *A. m. marmorata*, Northern Pacific Pond Turtle. **Status:** COSEWIC—Extirpated; GENERAL STATUS—Extirpated (BC). **Contributor:** Raymond A. Saumure.



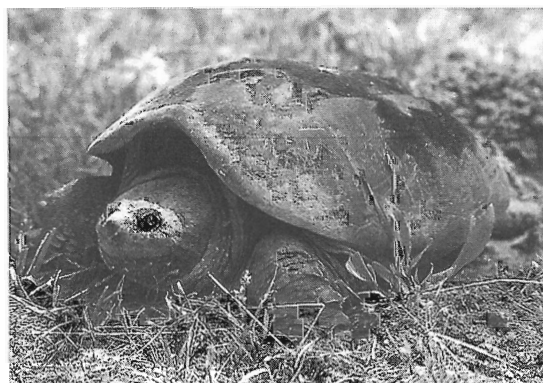
Western Pond Turtle, *Actinemys marmorata*. Photo by Ray Saumure.

Apalone spinifera (Spiny Softshell, Tortue-molle à épines). **Other Names:** *Trionyx spiniferus*. **Distribution:** Southern Québec and Ontario. Four subpopulations have been identified: the Ottawa River and St. Lawrence River watersheds, Lake Champlain and its tributaries, western Lake Ontario, and areas throughout southwestern Ontario. All Canadian populations are included in *A. s. spinifera*, Eastern Spiny Softshell. **Status:** COSEWIC—Threatened; GENERAL STATUS—At risk (ON, QC). Habitat degradation and loss, incidental catch, and likely historical overharvest are the primary reasons for declines of *A. spinifera* in Canada. Colonial nesting sites remaining at Rondeau Provincial Park and Big Creek National Wildlife Area are on protected public lands, but these are subject to disturbance by recreation, vandalism, and predation. **Contributors:** Scott D. Gillingwater, Michelle Fletcher.



Spiny Softshell, *Apalone spinifera*. Photo by Scott Gillingwater.

Chelydra serpentina (Snapping Turtle, Chelydre serpentine). **Distribution:** All of Nova Scotia including Cape Breton Island, westward across southeastern New Brunswick, southern Québec, south and central Ontario, and the southern half of Manitoba to southeastern Saskatchewan. All Canadian populations are included in *C. s. serpentina*, Eastern Snapping Turtle. **Status:** COSEWIC—none; GENERAL STATUS—Sensitive (MB, SK), Secure (ON, QC, NB, NS), Undetermined (SK). **Contributor:** Ronald J. Brooks.



Snapping Turtle, *Chelydra serpentina*. Photo by David Rodrigue.